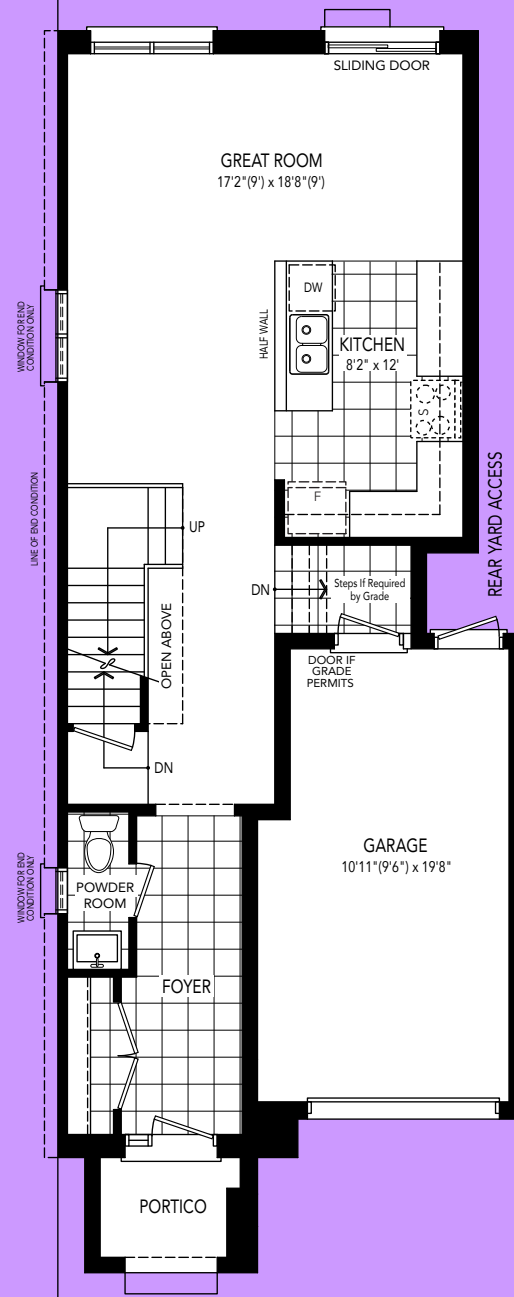
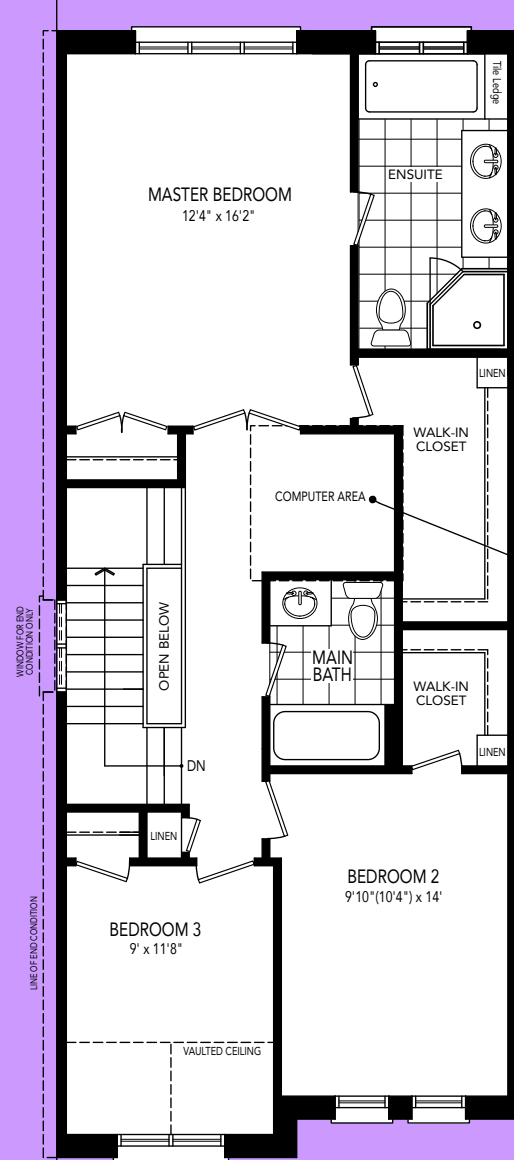


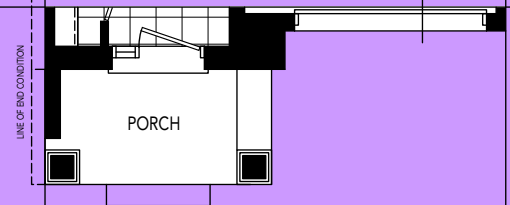
BASEMENT PLAN ELEV. 'A'



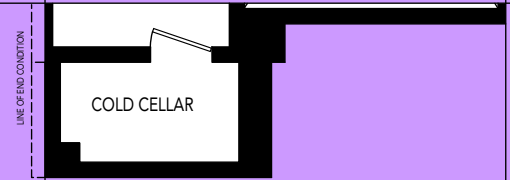
GROUND FLOOR PLAN ELEV. 'A'



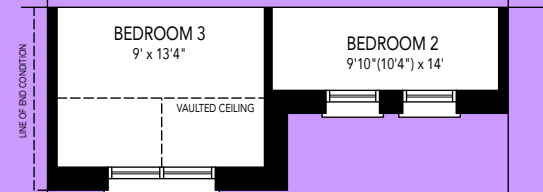
SECOND FLOOR PLAN ELEV. 'A' & 'B'



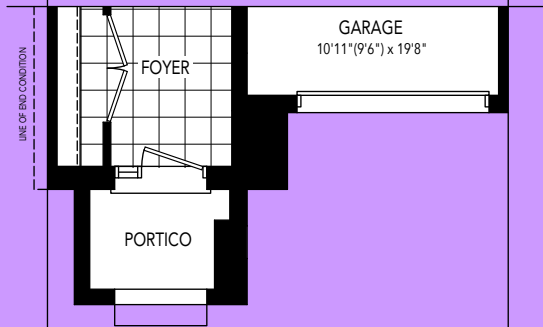
PARTIAL GROUND FLOOR PLAN - ELEV. 'B'



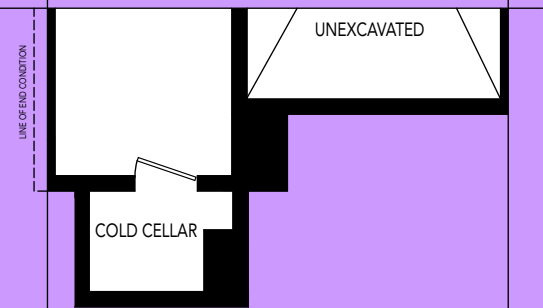
PARTIAL BASEMENT PLAN ELEV. 'B'



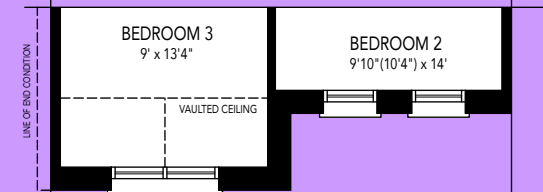
PARTIAL SECOND FLOOR PLAN - ELEV. 'A1'



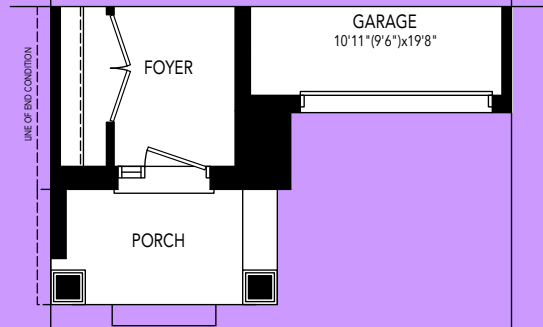
PARTIAL GROUND FLOOR PLAN - ELEV. 'A1'



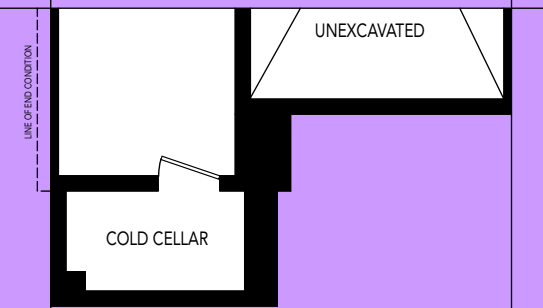
PARTIAL BASEMENT PLAN ELEV. 'A1'



PARTIAL SECOND FLOOR PLAN - ELEV. 'B1'



PARTIAL GROUND FLOOR PLAN - ELEV. 'B1'



PART. BASEMENT PLAN ELEV. 'B1'

BT-4
 1635 Sq.Ft. A/B
 1690 Sq.Ft. END A/B
 1665 Sq.Ft. A1/B1
 1725 Sq.Ft. End A1/B1