

# 45' COLLECTION

## PLAN / MC45-3



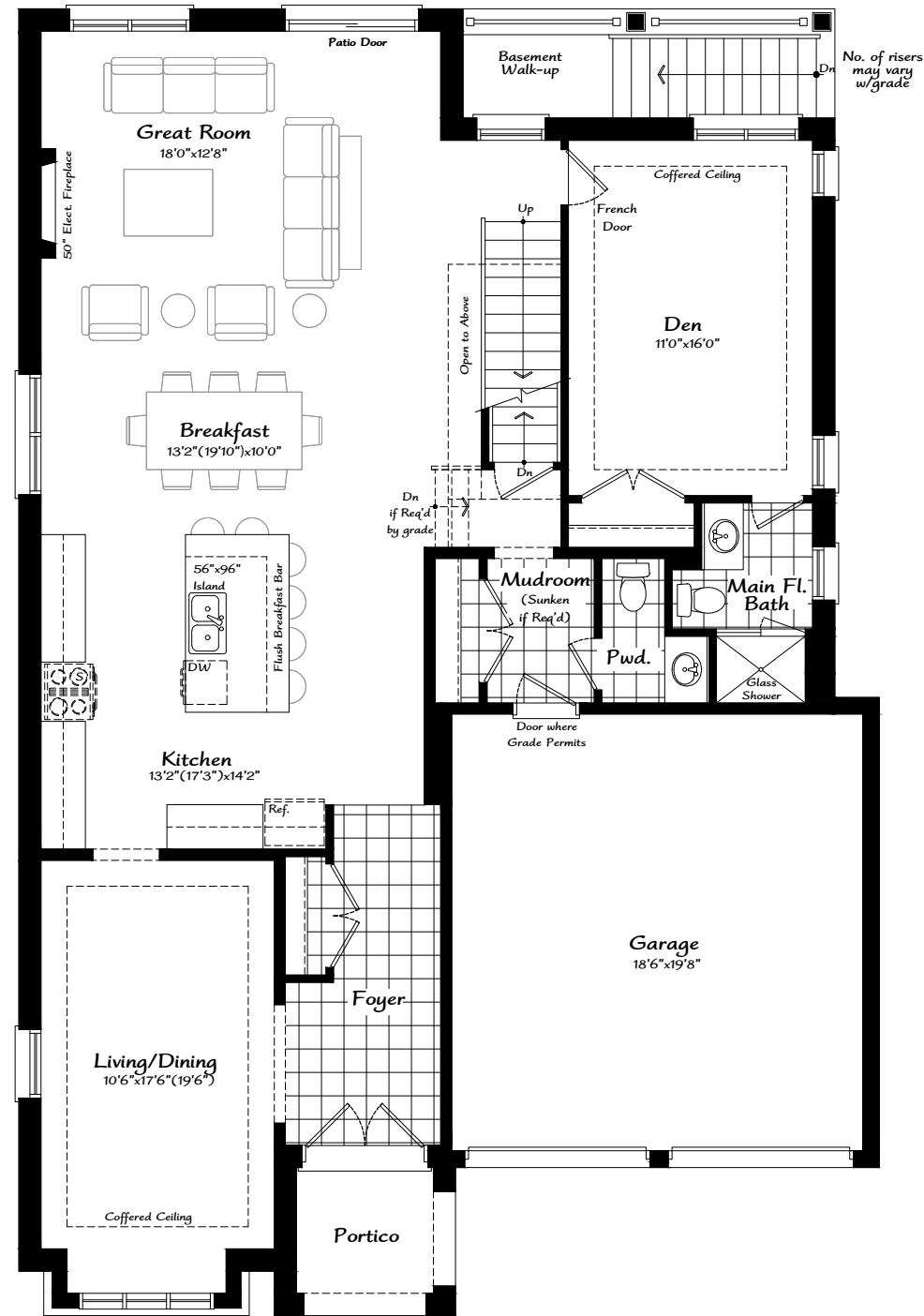
## PLAN / MC45-3

INFO	ELEV A	ELEV B	ELEV C	ELEV D
SQ.FT.	3,459	3,497	3,460	3,479
BEDROOMS	4+1	4+1	4+1	4+1
BATHROOMS	5.5	5.5	5.5	5.5
GARAGE	2	2	2	2

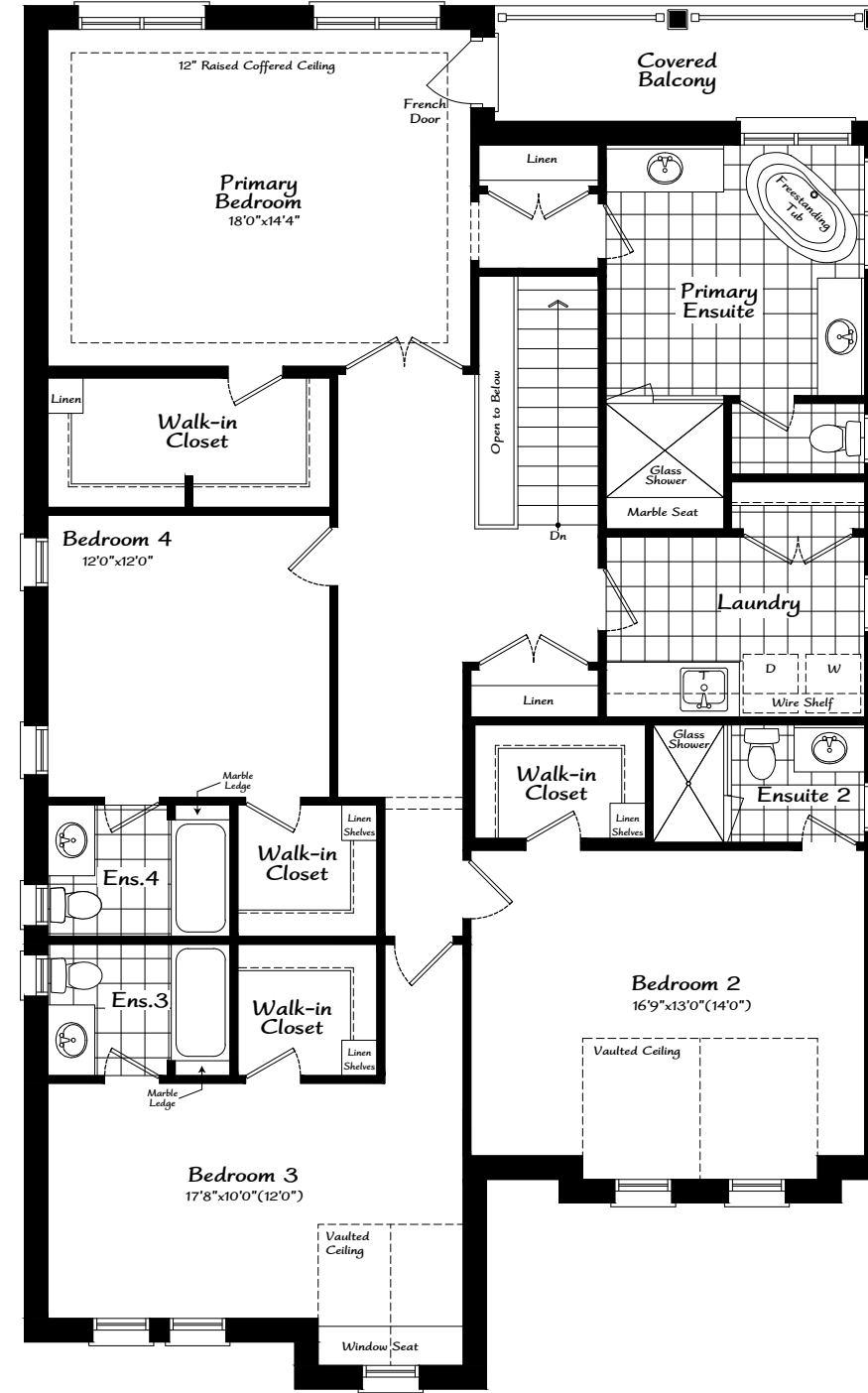
Materials, specifications, and floor plans are subject to change without notice. All renderings are artist's conceptions. All floor plans are approximate dimensions. Actual usable floor space may vary from the stated floor area. E. & O.E.



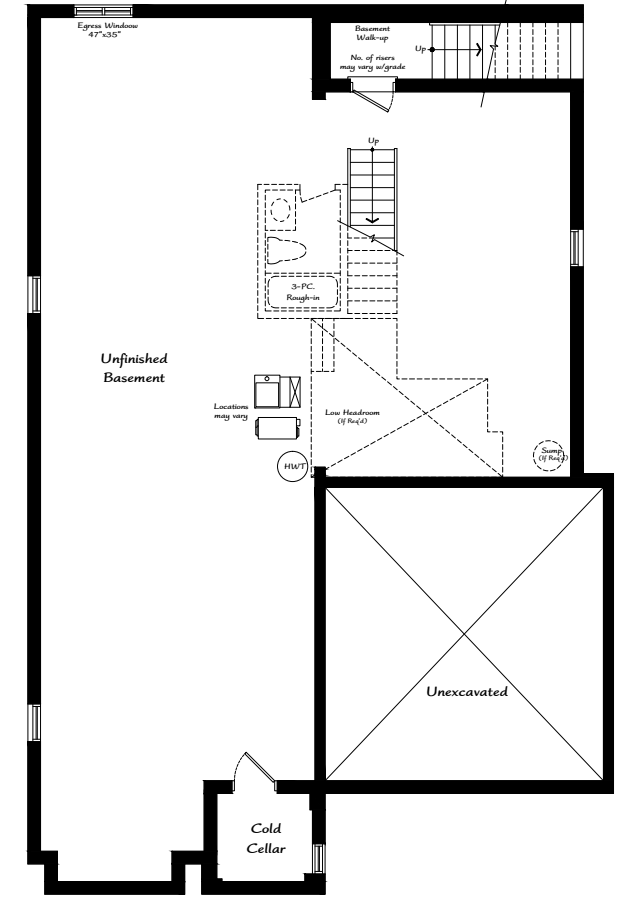
# 45' COLLECTION PLAN / MC45-3



Ground Floor Plan 'A'



Second Floor Plan 'A'



Basement Plan 'A' / 'C'

## Included Premium Features

- Hardwood Floors Throughout
- Quartz Counters in Kitchen and all Bathrooms
- 9' Ceilings in Basement, Main & Primary Bedroom
- Smooth Main Floor Ceilings
- Glass Showers
- Free Standing Primary Ensuite Tubs
- Large Basement Windows with 1 Egress Window
- 50" Linear Fireplace
- 200 Amp Electrical Service
- 10 Pot Lights
- Rough-In EV Car Charger
- Dual Zoned HVAC system with WiFi Thermostat
- Kitchen Backsplash

All Townwood Homes will be built 20% better than the Ontario Building Code (as per 2022 OBC guidelines)

Materials, specifications, and floor plans are subject to change without notice. All renderings are artist's conceptions. All floor plans are approximate dimensions. Actual usable floor space may vary from the stated floor area. E. & O.E.